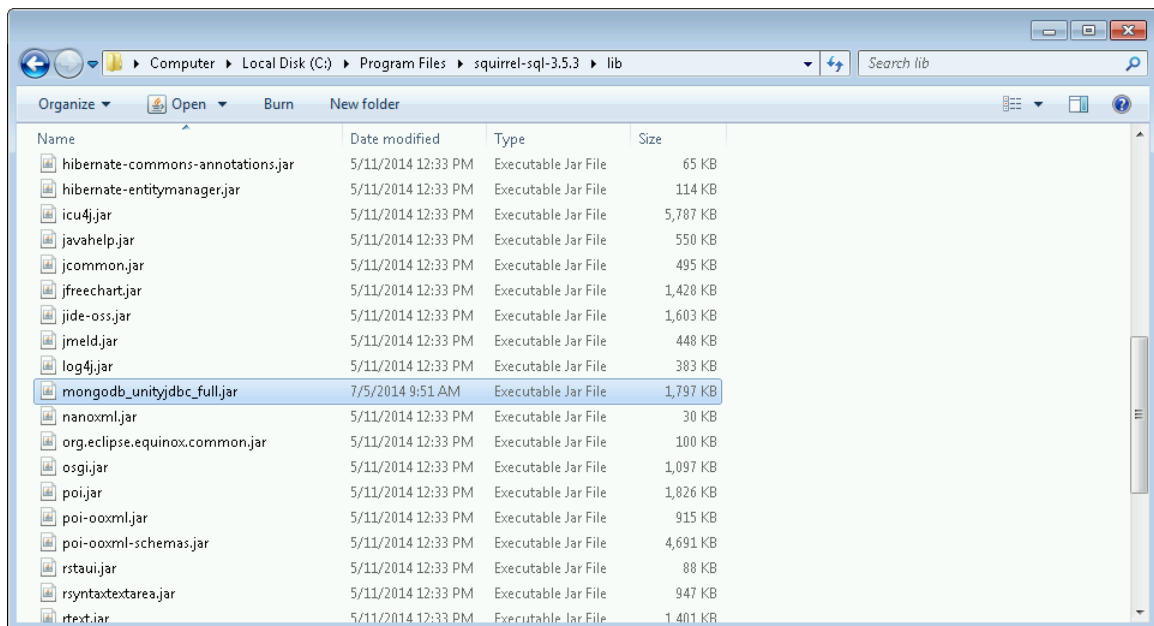


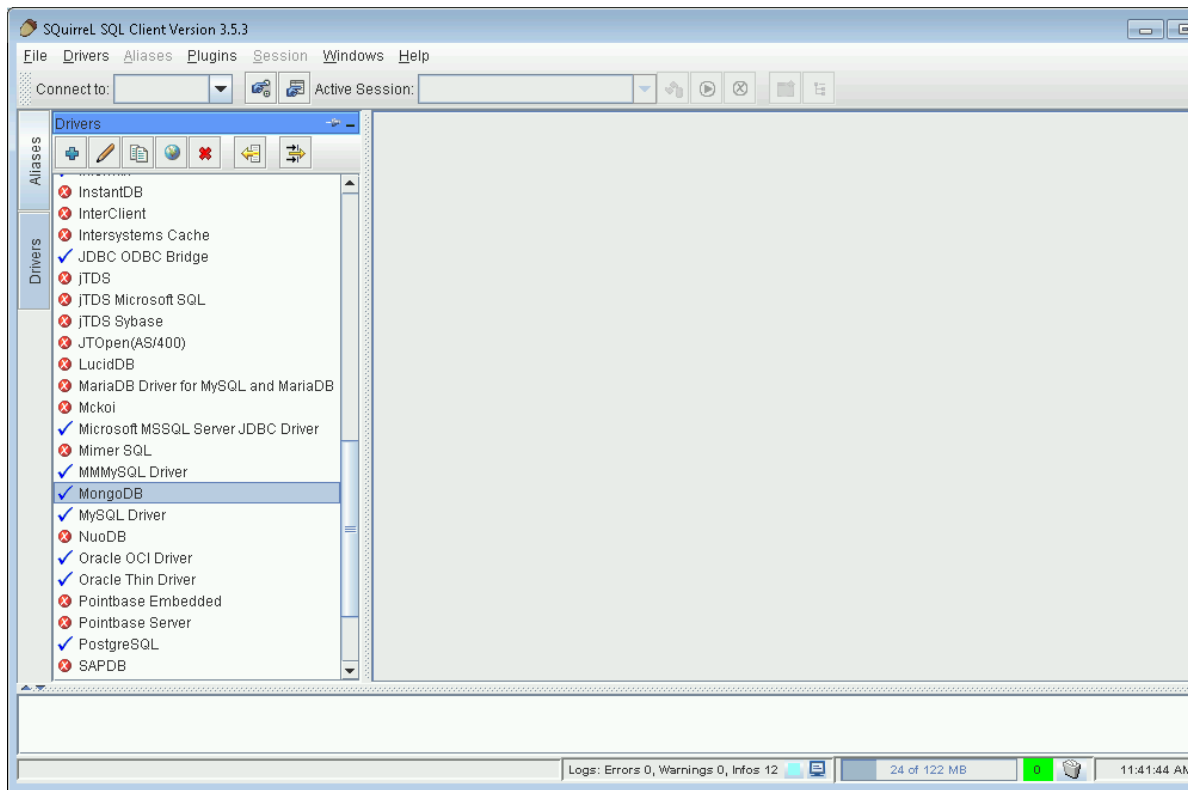
# MongoDB JDBC and UnityJDBC Driver Setup for Squirrel SQL


---

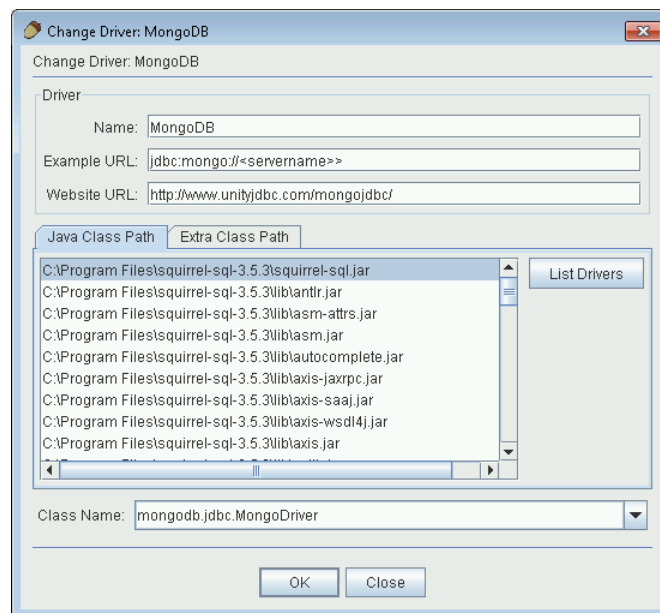
1. Download and extract the MongoDB JDBC package. You will need the **mongodb\_unityjdbc\_full.jar** if you are just using MongoDB or the **unityjdbc.jar** and the **mongo-java-driver-2.12.2.jar** if you are using MongoDB as well as UnityJDBC for querying multiple databases.
2. Place the JAR file(s) in the **lib** folder for your Squirrel SQL installation. For example:  
**C:\Program Files\squirrel-sql-3.5.3\lib**




3. Start Squirrel SQL. Under the **Drivers** tab you will see **MongoDB** checked. If not, the JAR file was not installed successfully.

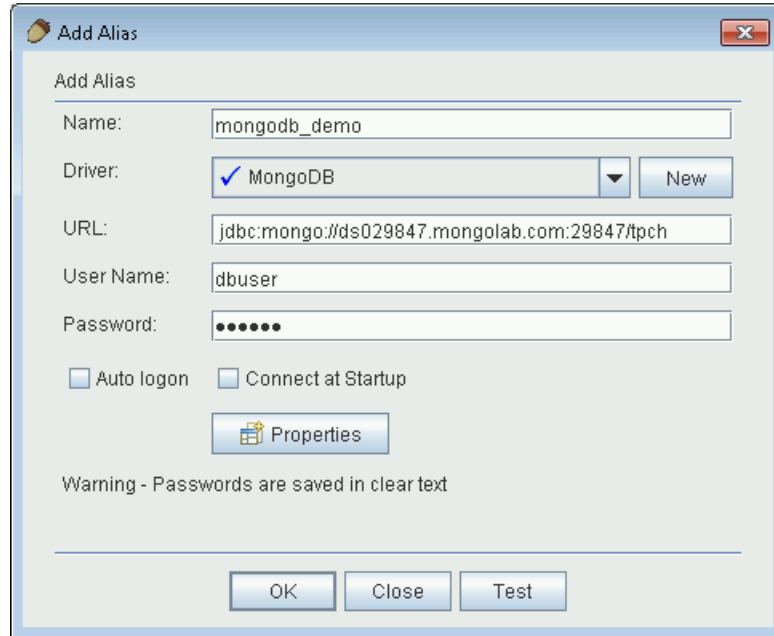



4. Click the pencil icon  to change (or view) the driver settings.

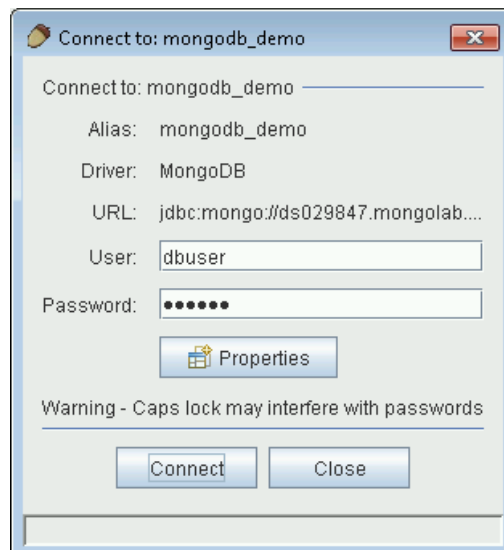


5. Click on the **Aliases** tab. Then click the plus symbol  to add a new alias. Here is alias information for a sample MongoDB database:

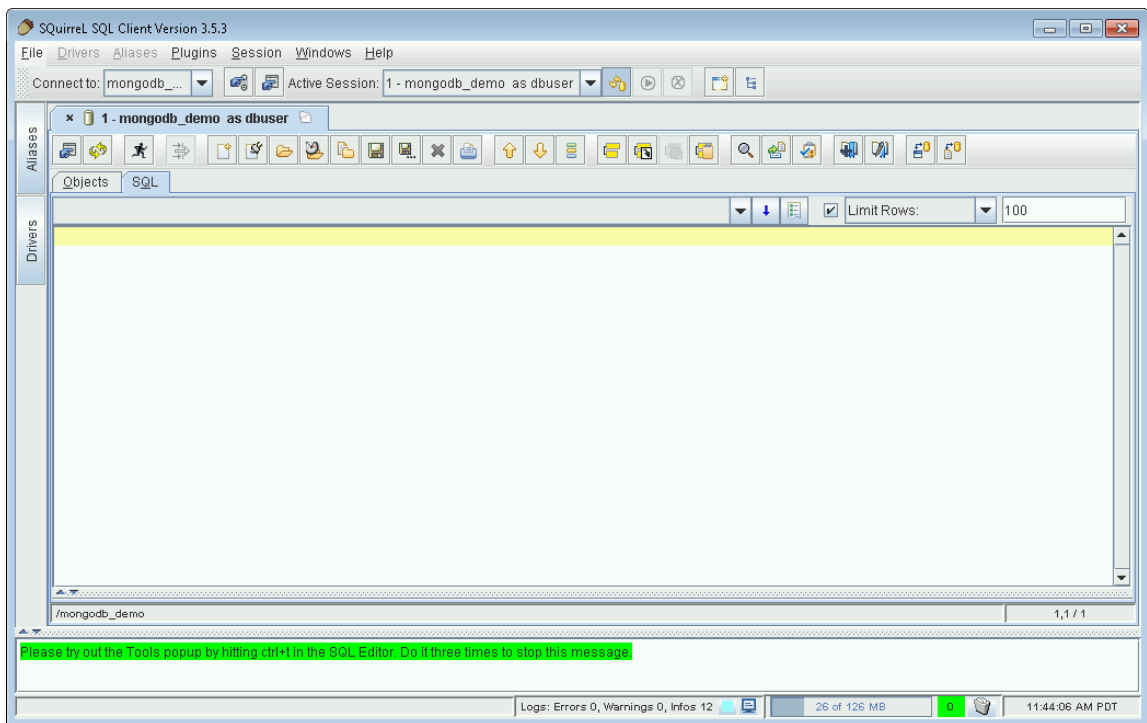
<b>Alias</b>	mongodb_demo
<b>User Name</b>	dbuser
<b>Password</b>	dbuser
<b>JDBC URL</b>	jdbc:mongo://ds029847.mongolab.com:29847/tpch



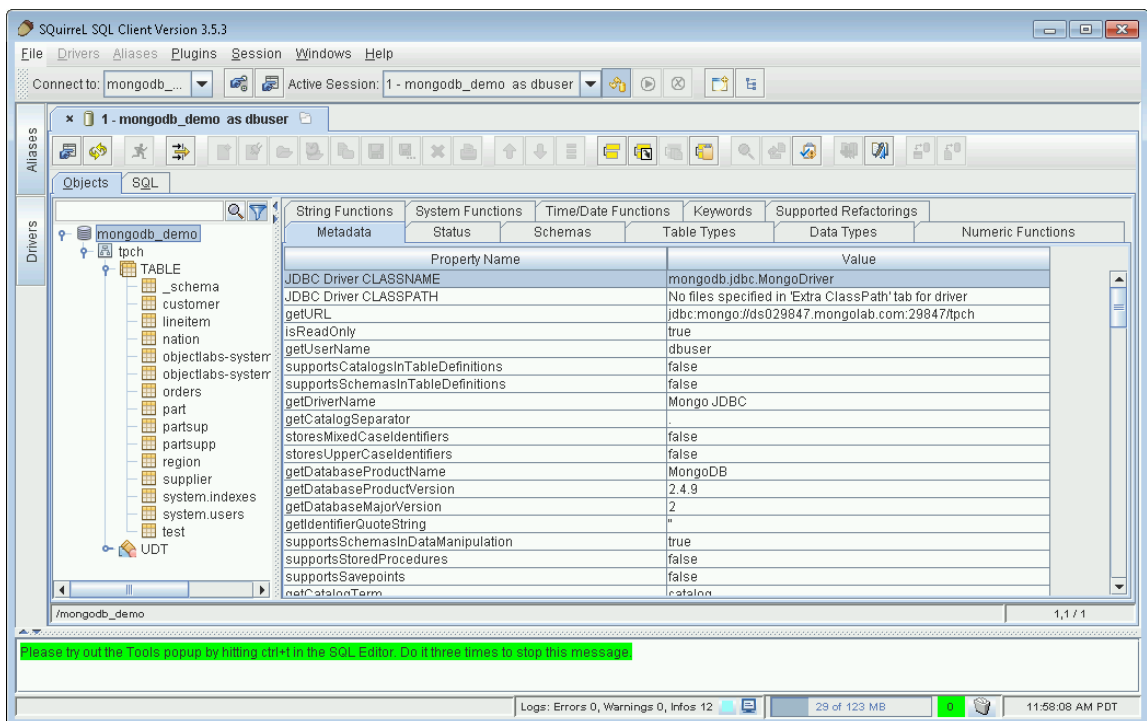
6. Click **OK**. You can then connect by clicking on the Connection icon  to the left of the plus or on the **Connect** button.



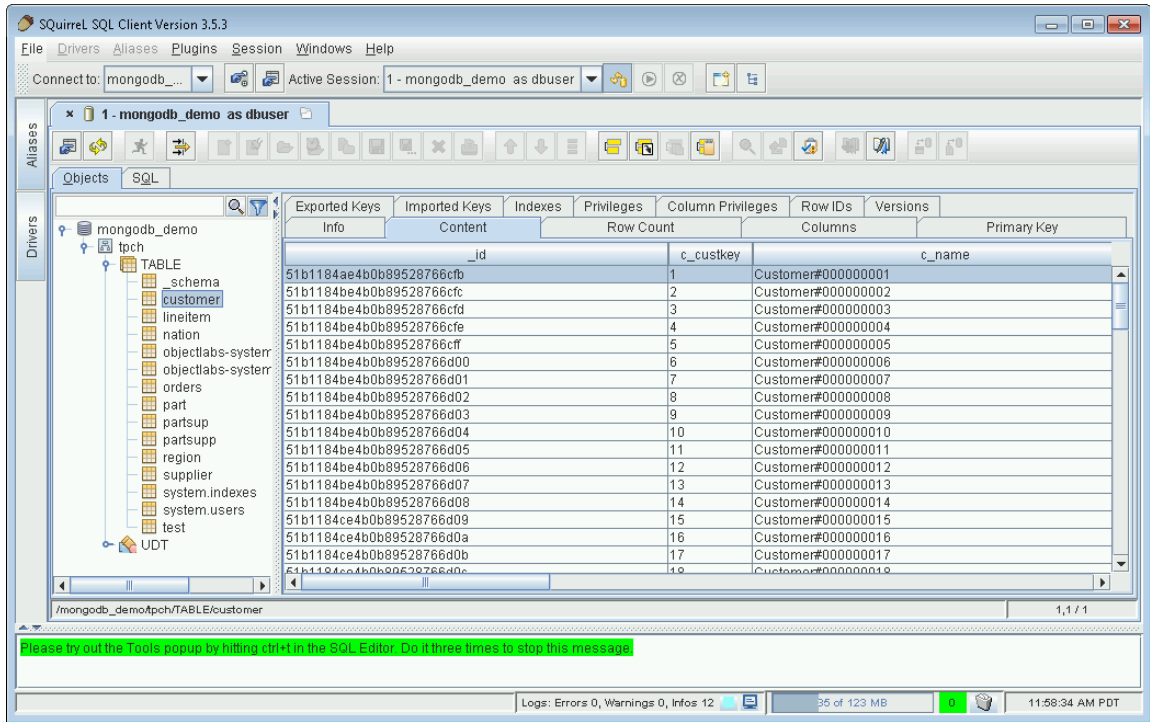
7. After connection you will see a window that allows you to enter SQL queries.



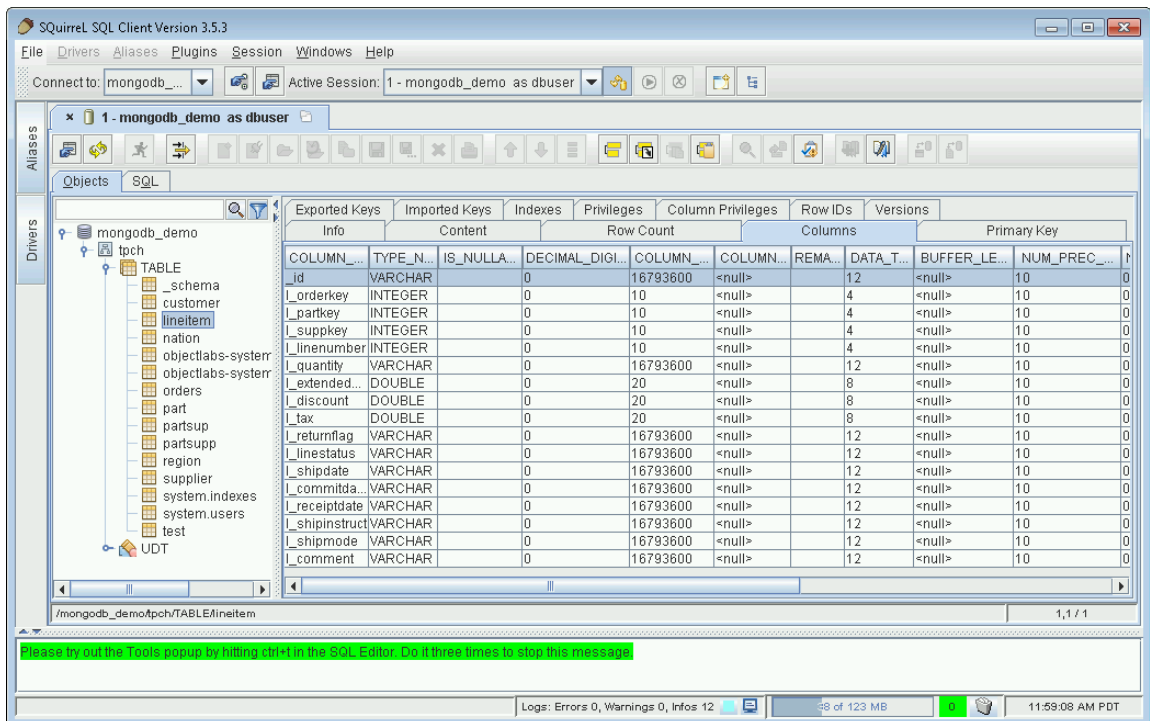
8. To browse the schema, click on the Objects tab.




9. View table contents by clicking on a table and selecting the **Content** tab.

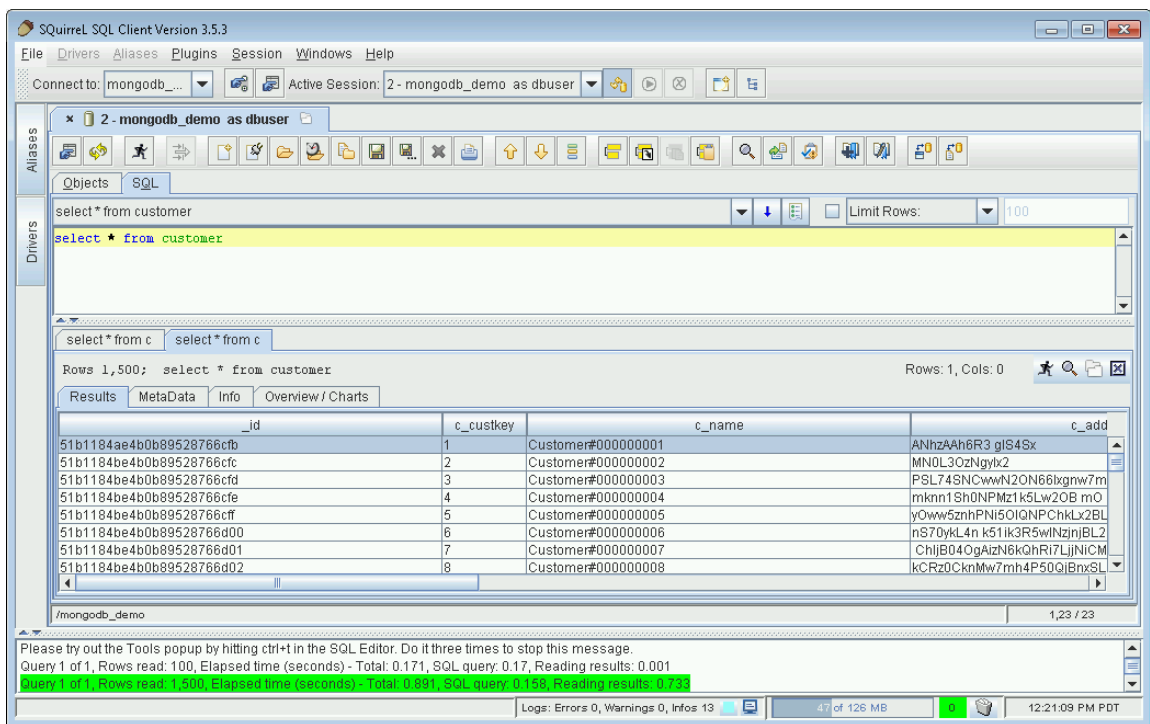


10. View table fields by clicking on a table and selecting the **Columns** tab.



11. Click **SQL** tab to enter queries. Click **Run**  to run a query. Here are two example queries. The first query queries a single table (collection) and runs completely on MongoDB. The number of results is unlimited. The second query uses a join that requires UnityJDBC. The trial version is limited to returning 100 rows. Upgrade to a full version at [www.unityjdbc.com](http://www.unityjdbc.com) for an unlimited number of rows. More details on querying is at: <http://www.unityjdbc.com/mongojdbc/mongosqltranslate.php>

<b>Query #1</b>	<code>SELECT * FROM customer</code>
<b>Query #2</b>	<code>SELECT * FROM customer INNER JOIN orders ON c_custkey = o_custkey</code>



The screenshot shows the Squirrel SQL Client interface. The SQL editor contains the query `select * from customer`. The results pane displays a table with 8 rows and 4 columns: `_id`, `c_custkey`, `c_name`, and `c_add`. The status bar at the bottom indicates: `Query 1 of 1, Rows read: 100, Elapsed time (seconds) - Total: 0.171, SQL query: 0.17, Reading results: 0.001`. A green highlight in the status bar shows: `Query 1 of 1, Rows read: 1,500, Elapsed time (seconds) - Total: 0.991, SQL query: 0.158, Reading results: 0.733`.

_id	c_custkey	c_name	c_add
51b1184ae4b0b89528766cfb	1	Customer#000000001	ANhzAAh6R3_gIS4Sx
51b1184be4b0b89528766cfc	2	Customer#000000002	MN0L3OzNgyb2
51b1184be4b0b89528766cfd	3	Customer#000000003	PSL74SNCwwN2ON66kxgnw7m
51b1184be4b0b89528766cfe	4	Customer#000000004	mkn1Sh0NPMz1k5Lw2OB mO
51b1184be4b0b89528766cff	5	Customer#000000005	yOww5znhPNI5OIQNPChkLx2BL
51b1184be4b0b89528766d00	6	Customer#000000006	nS70yK4n k51k3R5wInznjBL2
51b1184be4b0b89528766d01	7	Customer#000000007	ChjJBD4OgAizN6kQhRi7LjNiCM
51b1184be4b0b89528766d02	8	Customer#000000008	kCRz0CknMw7mh4P50QlBnxSL

Squirrel SQL Client Version 3.5.3

File Drivers Aliases Plugins Session Windows Help

Connect to: mongodb\_... Active Session: 1 - mongodb\_demo as dbuser

1 - mongodb\_demo as dbuser

Objects SQL

```
select * from customer C inner join orders o ON c_custkey = o_custkey
```

Limit Rows: 100

```
select * from customer C inner join orders o ON c_custkey = o_custkey
```

Rows 100; select \* from customer C inner join orders o ON c\_custkey = o\_custkey Rows: 1, Cols: 0

Results MetaData Info Overview / Charts

_id	c_custkey	c_name	c_add
51b11887e4b0b89528767007	781	Customer#000000781	nB kLISyLnSBAxBPR4x42IS7ggz
51b118aae4b0b895287671cc	1234	Customer#000001234	mRAMC0nNSwP1ymw56R1P3LE
51b1186de4b0b89528766eb7	445	Customer#000000445	46PMgPIBQn0AjlSh3172mQ
51b11876e4b0b89528766f27	557	Customer#000000557	71iLzlj K4 3
51b11869e4b0b89528766e82	392	Customer#000000392	37wizmN64xn06i
51b118afe4b0b8952876720f	1301	Customer#000001301	Rk4A5My7xnOwg4N5h21ISxwCj
51b1187fe4b0b89528766f98	670	Customer#000000670	kNQ2N76k0mgCkz2GkN7wmhE
51b1187ae4b0b89528766f5d	611	Customer#000000611	6ntzw6AwRj6LZA72hn4MB5MBh

/mongodb\_demo4pch/TABLE/Item 1,70 / 70

Query 1 of 1, Rows read: 100, Elapsed time (seconds) - Total: 0.164, SQL query: 0.159, Reading results: 0.005  
 Query 1 of 1, Rows read: 1,500, Elapsed time (seconds) - Total: 0.937, SQL query: 0.157, Reading results: 0.78  
 Query 1 of 1, Rows read: 100, Elapsed time (seconds) - Total: 0.911, SQL query: 0.907, Reading results: 0.004

Logs: Errors 0, Warnings 0, Infos 13 36 of 124 MB 12:00:39 PM PDT